

Stjernen

Grindsted Vestre Skole



Parent folder

Welcome to Vestre Skole in Grindsted

In this folder we have collected the most necessary information about your child's schooling at Stjernen (the Star) of Vestre Skole.

We hope that this folder will provide answers to some of your questions. If not, you are always welcome to ask the teachers.

You can either read the folder from one end to the other, or you can use it as lookup tool.

Looking forward to a profitable collaborative relationship with you, we once again bid you a hearty welcome to Vestre skole!



Vestre Skole

Vestre Skole is divided into the following units:

Raketten (the Rocket) – form levels 0-3

Kloden (the Globe) – form levels 4-6

Kompasset (the Compass) – form levels 7-9

The Sun is a special unit, comprising Lille Sol (the Little Sun), Mellem Sol (the Middle Sun) and Store Sol (the Big Sun).

Stjernen (the Star) is our reception unit for multilingual students. Stjernen is similarly split up into age groups (young, in-between and older students).

Stjernen

Stjernen is the collective name of our reception unit for multi-lingual students at Vestre Skole. Reception units are intended for students who are newcomers from another country and whose knowledge of Danish is insufficient. Every child between the ages of 5½ and 17 having moved to the town of Grindsted and its environs from another country must attend school at Vestre Skole. The students will be eligible for receiving this intensive basic instruction in the Danish language for a maximum period of 3 years. The teaching is planned in such a way that, through relevant topics, the students will acquire relevant learning strategies and insights into own language acquisition for the purposes of enabling them to communicate in Danish, oral as written, and to hold their own – at school as in society – in a critical and reflecting way.

At Stjernen, the students will experience a safe language environment which will provide them with the linguistic confidence that is a precondition for successful language acquisition. When at home, it is important that the students continue to speak their mother tongue. Learning a new language, it is important that they have an opportunity to listen to a different language as well as interacting with other people in this language.

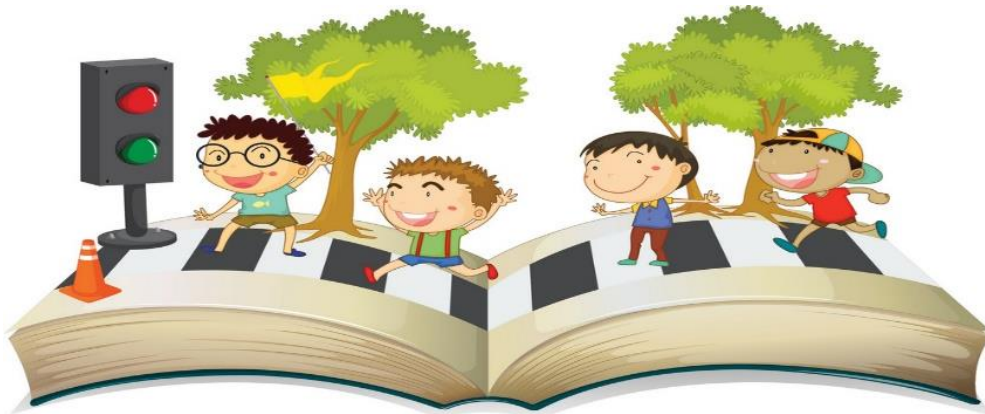
To ensure progression, the students will be subjected to testing every third month. After every test period, the team around the students will assess whether the individual student will be ready for enrolment in the district school to which he or she belongs. One month prior to your child's transfer of school, you will be notified thereof and subsequently invited to a meeting at the new school, unless your child's district school is Vestre Skole.

On the date of the referral meeting, to be held prior to the student's attendance at Stjernen, the enrolment papers will be filled in with personal information and the confirmation of computer loan. All students attending the schools within the Billund Municipality will be assigned a loan computer. An agreement will be drawn up concerning the care of the computer. In the event of self-caused damage, the parents' insurance shall cover such damage.

Also, we will request your permission to take pictures of your child. The pictures will solely be for internal use, such as e.g. posting on our closed Facebook group. All students will get their own UNI login for the purpose of accessing various portals – to which the parents will also have access through their own login.

Rules of conduct at the school

- The students are only allowed to eat in the canteen and outdoors
- We have a class prefect scheme where the students take turns to keep the classroom tidy
- No running is allowed in the corridors
- No student is allowed to leave the school during school hours
- No bullying
- We take care of one another
- We respect one another
- Mobile phones will be left at our mobile hotel during lessons, unless the teachers decide otherwise
- The charger for the computer must be brought along every day





Communication

You have a variety of options for communicating with the school. You can use Aula which enables you to communicate with all the school's employees as well as other parents. This is also where the teachers will post information. The following closed Facebook groups are frequently used by Stjernen:

Lille Stjernen (the Small Star) – Vestre Skole

Mellem Stjernen (the Middle Star) – Grindsted Vestre Skole

Store Stjernen (the Big Star) – Grindsted Vestre Skole.

This is where, on an ongoing basis, there will be postings and pictures displaying everyday life at school. This Facebook Site is also where you will receive various other information.

You can always reach the school via one of the below phone numbers:

Lille Stjernen: 21539946

Mellem and Store Stjernen: 21373431

School office: 72131140



Exemption from school attendance

It is always important to contact the school if, for instance, you ask for a day off on behalf of your child, or if your child is sick. You can either write a mail via Aula or leave a message via the school phone. If it is a matter of only one day off, it will be OK to contact one of Stjernen's teachers via the school phone. If it is a matter of more days off, it is important that you contact the school's office.

If we have not received a message about exemption or otherwise, a message will be sent to the home, and the absence will be registered as illegal absence.

Bus

Students living outside of the town of Grindsted will be issued with a bus-travel pass, and the school will hand out a bus schedule. This bus-travel pass can only be used by the student who is entitled to a bus-travel pass. Likewise, the card will not be valid in weekends and holidays.

Each morning and afternoon, respectively, Salah will pick up and bring the children from/to the bus stop. Unfortunately, it is not possible for us to provide a similar solution for children attending the SFO (before and after-school care).



SFO

This before and after-school care is for children between the ages of 5½ and 10 which means students attending form levels 0-3. Application for entry takes place via Life in Denmark (Borgerservice (borger.dk)), and the child can be enrolled from day to day. It will also be possible to enrol you child for a different SFO than the one linked with Vestre Skole. This could for instance be the SFO of the district school.

The opening hours of the SFO are Monday-Thursday 6:15 a.m. to 4.45 p.m., and Friday 6:15 a.m. to 4 p.m.



Packed lunches

There will be two large breaks in the course of the school day for which it is important that the child brings a healthy and nourishing packed lunch, fruit and drink. At the canteen, the child can buy beverages, bread, yoghurt, various types of warmed bread with stuffing. Packed lunches or snacks should not contain sweets, cakes, crisps, etc.



The library

All students are entitled to borrow books from the school's library. When the student has been registered in our system, he or she will be issued a number that will facilitate his/her taking books home from the library. The students will be very welcome to take home books during holidays. It is important that the books are returned to the school when the child has read them.





The school nurse

Form level 0: Health interviews, a screening of the child's motor development, measurement of height and weight, visual and auditory function tests

Form level 1: Measurement of height and weight

Form level 3: Health interviews, individual or in groups. Measurement of height and weight

Form level 5: Puberty education

Form level 6: Health interviews, individual or in groups, visual function test, measurement of height and weight

Form level 8: Examination of school-leaving classes: individual health interviews, measurement of height and weight together with visual and auditory function tests.

Supplementary offer: In the event of special needs – individual health interviews with children, young people and parents



The school year

The school year is spread over 40 weeks. These 40 weeks are split up into five periods, and each period comprise 8 weeks' project-based teaching. Some of the project weeks will be completed by an exhibition or presentation to which we would like to invite you, the parents, to attend.



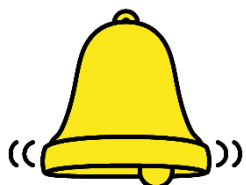
Meetings

Two times annually, Stjernen will summon the parents to a parent-teacher meeting about everyday life at Stjernen. At Vestre Skole, we work with 5 projects of 6-8 weeks' duration in the course of a school year. At the completion of every project, you will be invited to a project presentation at which the students will talk about the project and the learning acquired through their work with the project.

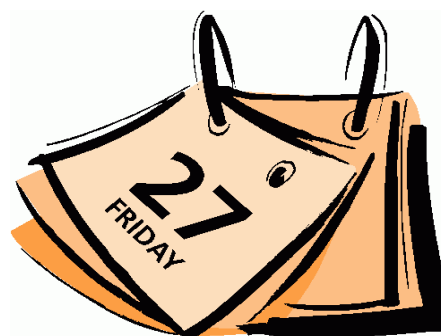
Twice a year, there will be student-governed parent-teacher consultations at which the student will talk about own academic and social development. You will be notified of these meetings well in advance. Naturally, you will always have the opportunity to request a meeting with the teachers if you are worried about something.

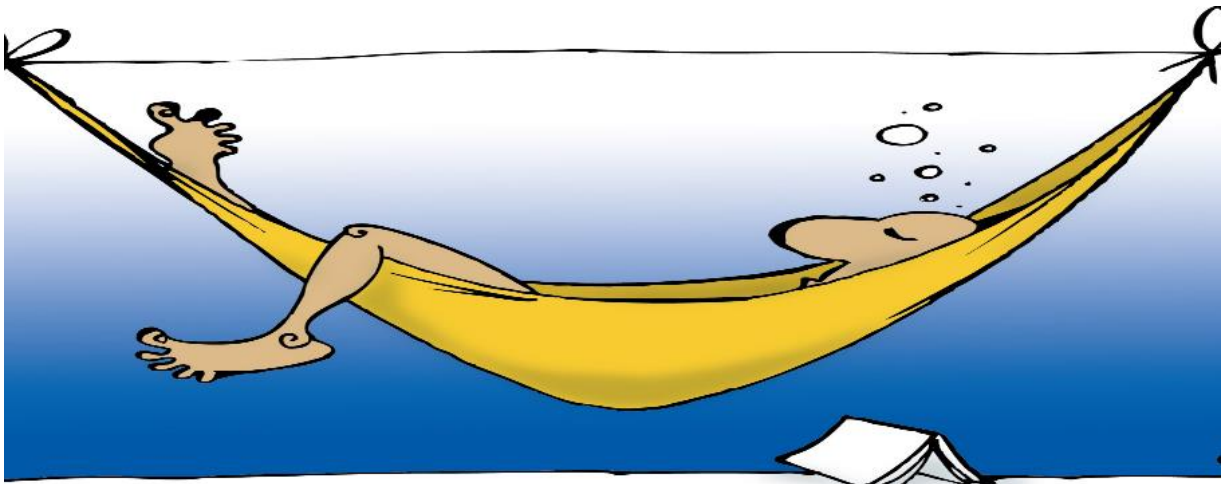


Bell-ringing periods



Bell-ringing	Lessons
7.50-8.35	Lesson 1
8.35-9.20	Lesson 2
9.20-9.40	Break
9.45-10.30	Lesson 3
10.30-11.15	Lesson 4
11.15-11.50	Break
11.50-12.35	Lesson 5
12.35-13.20	Lesson 6
13.20-13.25	Break
13.25-14.10	Lesson 7





Holiday plan

As the holiday plan is not the same from one year to the next, please make note of the holidays via the link below:

<https://www.billund.dk/borger/pasning-og-skoler/skole/folkeskolerne/>

Spare time

It is important to be a part of the spare-time activities taking place in your municipality of residence, as this can be a means to establish social friendships. Billund Municipality provides a number of spare-time activities for children within both sports and culture. Some of these offers can be found on:

<http://www.ggif.dk> (in Danish only)

<http://billundkultur.dk>



Questions

We hope that this folder will clarify some of the questions you, as parents, may have when your child begins school at the Stjernen unit of Vestre Skole. Together with this folder received at the referral, you will also receive a Culture Document for Vestre Skole, describing our work and everyday with the students at the school. Should there be other questions, you are always welcome to contact the school.

Looking forward to a profitable collaborative relationship with you, we once again bid you a hearty welcome to Vestre skole.

