

Grindsted Vestre Skole

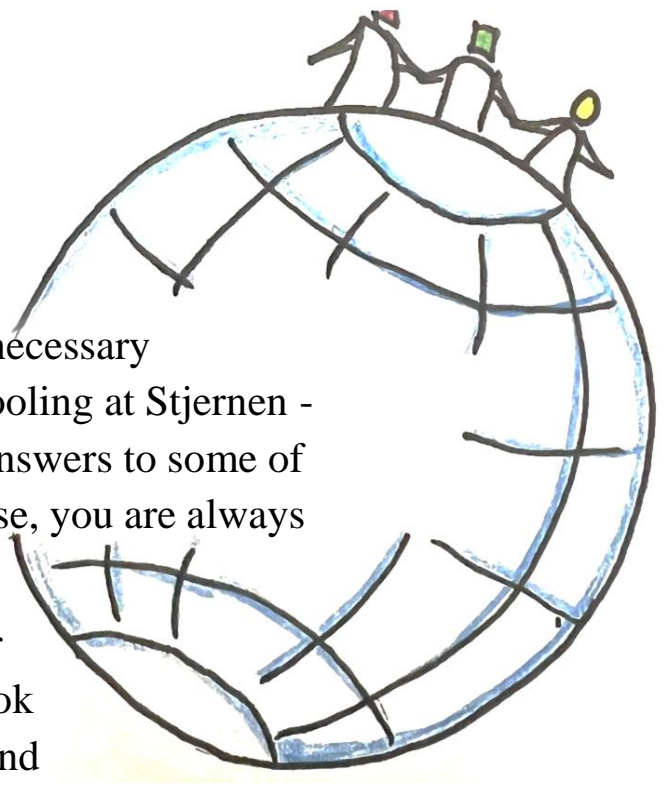


PARENTAL LEAFLET

Welcome to Grindsted Vestre Skole

In this leaflet, we have collected the most necessary information for you about your child's schooling at Stjernen - Vestre Skole. We hope that you will find answers to some of your questions here in this leaflet. Otherwise, you are always welcome to ask the teachers.

The leaflet can be read from cover to cover or used as a kind of reference work. We look forward to a good collaboration with you and once again warmly welcome you to Vestre Skole!



Vestre Skole

Vestre Skole has the following departments:

- Raketten (*The Rocket*): 0.-3. grade
- Kloden (*The Globe*): 4.-6. grade
- Kompasset (*The Compass*): 7. - 9. grade
- Solen (*The Sun*) is a special department that includes Lille Sol (*Little Sun*), Mellem Sol (*Middle Sun*) and Store Sol (*Big Sun*). The age division is similar to the other three departments.
- Stjernen, where we receive multilingual students from all over Billund Municipality, is divided by age in the same way as the rest of the school.



Stjernen - reception classes at Vestre Skole

"Stjernen" is the common name for the reception classes at Vestre Skole. It offers intensive basic Danish lessons to children and young people aged 5½ to 17 who have moved to Denmark from another country and have not yet acquired sufficient Danish skills.

All newly arrived students in Billund Municipality start at Stjernen at Vestre Skole, where they can receive teaching for up to three years. The teaching is organized based on realistic and authentic projects that aim to strengthen the students' learning strategies and awareness of their own language acquisition.

The goal is that students will eventually acquire sufficient skills to be able to function in school and society and can communicate in Danish - both orally and in writing - with a critical and reflective approach.

Stjernen offers a safe and appreciative learning environment with a special focus on language development and linguistic self-confidence - both of which are central to the successful acquisition of Danish. At the same time, families are encouraged to preserve and maintain their first language at home, as it is important that the children continue to use their first language while learning a new one. It is particularly important **that** the students have the opportunity to both listen to and produce language themselves in meaningful interaction with others.

The students' linguistic and academic development is closely monitored, ensuring that children acquire a new language at different paces. At the beginning of the program, a calm and secure environment is created when starting, so that the students have the opportunity to settle in and begin to discover and use the new language at their own pace.

Teaching is organized in a differentiated manner based on the individual student's linguistic and academic background. Once the student has settled in and has achieved a basic understanding of the Danish language, a linguistic and academic assessment is carried out in order to monitor and support the student's continued progress.

Based on these assessments and a comprehensive assessment of the student's well-being and learning, the team discusses whether the student is ready for a transfer to their district school. Parents are informed no later than one month before a possible transfer and are invited to a start-up meeting at the new school - unless the district school is Vestre Skole.

There can only be transfers to other schools 4 times a year.

1. With expected start after the autumn holidays
2. With expected start after the Christmas holidays
3. With expected start after the Easter holidays
4. With expected start after the summer holidays

At the visitation meeting before starting at Stjernen, enrollment papers are filled out, including personal information and a confirmation of receipt of a computer, which is made available to all students in Billund Municipality. A contract must be signed regarding responsible use and maintenance of the computer. Any self-inflicted damage is covered by the parents' own insurance.

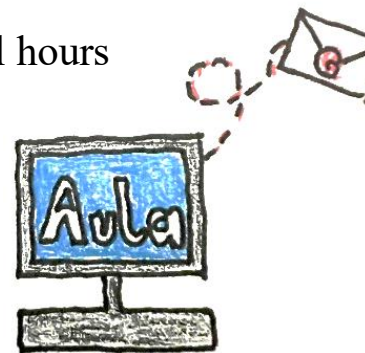
We also ask for consent to take photos of the child for internal use, for example, for posting in our closed Facebook group.

All students are assigned a personal UNI login, which gives access to digital learning portals. As a parent, you will also have your own login and access to relevant platforms.



School rules of conduct

- Students are only allowed to eat in the canteen and outside
- Clean-up agreement, where students help keep the classroom tidy
- No one is allowed to run in the hallways
- No one is allowed to leave the school during school hours
- No bullying
- We look out for each other
- We respect each other
- Mobile phones must be in the mobile hotel during classes, unless the teachers have said otherwise
- The charger for the computer must be brought with you every day



Communication

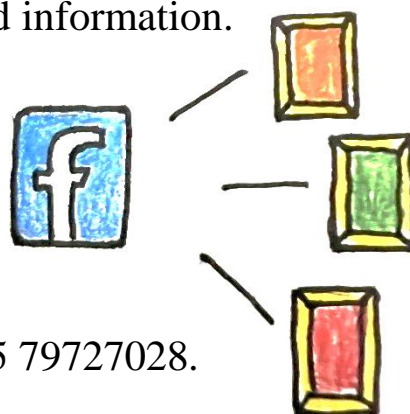
There are many opportunities for communication with the school. You can use the Aula, where you can communicate with all employees and other parents at the school, and where teachers can also send information.

Stjernen uses a closed Facebook group called:

Stjernen - Grindsted Vestre Skole

Here there will be regular posts and pictures showing everyday life at the school.

It is always possible to contact the school office at +45 79727028.

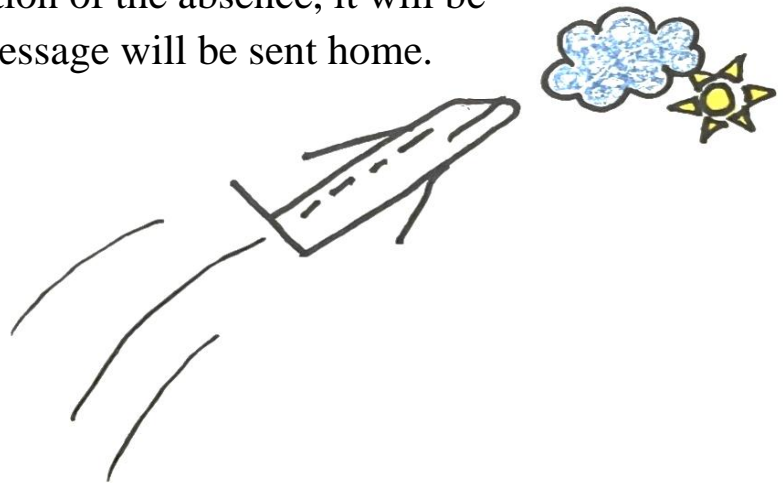


Exemption

It is important that the school is always informed if your child is sick or needs time off.

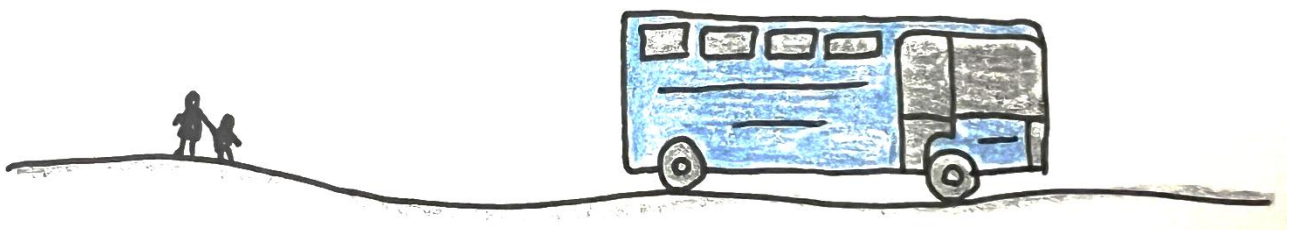
In the Aula you will find the *MU student absence* icon. Here you must state the reason for the absence - and when applying for extraordinary leave you must also state the duration.

If we do not receive notification of the absence, it will be registered as illegal, and a message will be sent home.



Bus

Students who live outside Grindsted town will be issued a bus pass, and the school will provide a bus schedule. The bus pass can only be used by students who are entitled to a bus pass. The pass will also not be useable on weekends and during holidays. Salah will pick up and drop off the children from the bus stop every morning and afternoon. Unfortunately, we are unable to accompany the children to the bus when they go to after-school care.



SFO (The after-school program)

The after-school program is for children from 5½ - 10 years old, corresponding to students from grade 0 to 3rd grade.

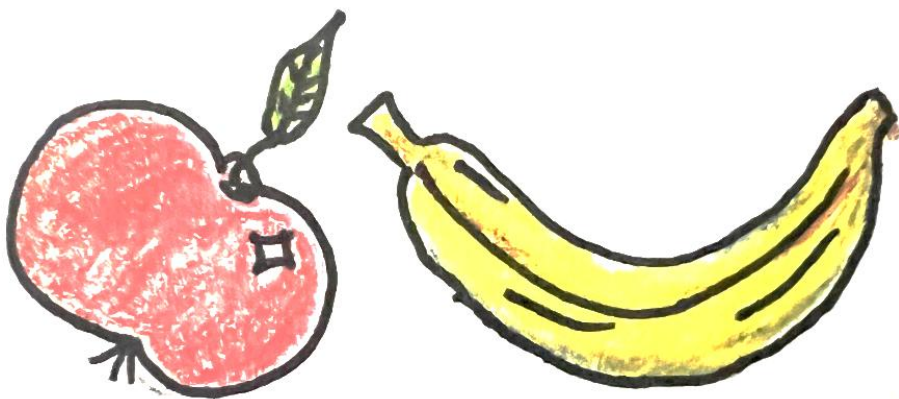
Registration is done at Borgerservice, and registration can be done from day to day. You will also be able to choose a different SFO (The after-school program) than Vestre Skole, which could be the district school's SFO (The after-school program).



The SFO is open Monday-Thursday from 6.15 am - 4.45 pm, and Friday from 6.15 am - 4 pm.

Lunchboxes

There are two long breaks during the day, during which it is important that the child brings a good and healthy lunchbox, fruit and something to drink. In the canteen it is possible to buy drinks, bread, yogurt, and various warm breads with fillings. Lunchboxes or snacks should not contain sweets, cakes, chips etc.



The library

All students have the opportunity to borrow books from the school library. When the student is registered in the system, a borrower number is assigned, which gives access to borrow books to take home - also during the holidays. It is important that the books are returned to the school when they have been read, so that other students can also enjoy them.



Healthcare

Grade 0: Health interviews, screening of the child's motor development, measurement of height and weight, vision and color vision test and hearing test.

1st grade: Measurement of height and weight.

3rd grade: Health interview individually or in groups. Measurement of height and weight.

5th grade: Puberty education.

6th grade: Health interview individually or in groups, vision test, measurement of height and weight.

8th grade: School-leaving examination: individual health interviews, measurement of height and weight, and vision and hearing test.

Supplementary offers:

Individual health interviews with children, young people and parents in case of special needs.

Collaboration and meetings

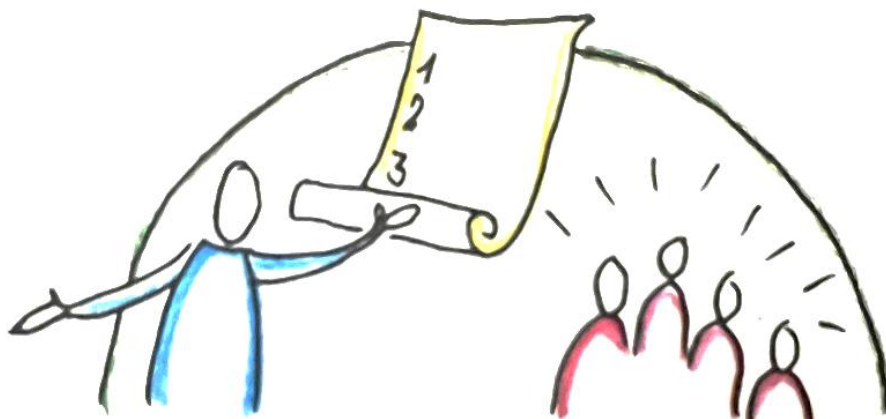
At Stjernen, we prioritize a close and trusting collaboration with you as parents. That is why we invite you twice a year to parent-teacher meetings, where we inform you about everyday life at Stjernen and provide insight into the children's learning and well-being.

Five projects are planned annually with emphasis placed on student involvement in the planning of the projects. Each project ends with a presentation where student-led discussions are part of the presentation.

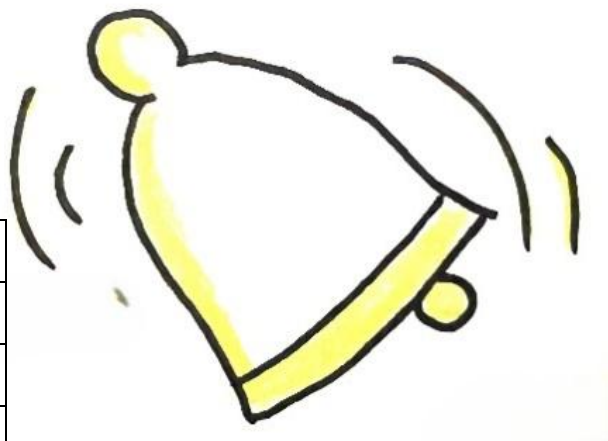
After each completed project, we will invite you to a presentation where the students present their work and talk about the knowledge and experiences they have gained. Who we invite will differ from time to time, but there is always the opportunity to come and see what your child has worked on during the project.

In addition, we hold student-led school-home discussions twice a year. Here, it is the students themselves who put their academic and social development into words. You will always be notified well in advance of these discussions.

If you have questions, concerns or would like a conversation outside of the scheduled meetings, you are of course always welcome to contact us to arrange a meeting with the teachers.



School bell times



School bell times	Lessons
7.50 am - 8.35 am	1 st lesson
8.35 am - 9.20 am	2 nd lesson
9.20 am - 9.45 am	Break
9.45 am - 10.30 am	3 rd lesson
10.30 am - 11.15 am	4 th lesson
11.15 am - 11.50 am	Break
11.50 am - 12.35 pm	5 th lesson
12.35 pm - 1.20 pm	6 th lesson
1.20 pm - 1.25 pm	Break
1.25 pm - 2.10 pm	7 th lesson

Holiday schedule

The holiday schedule varies from year to year, so please check the holiday dates at the link below:

<https://www.billund.dk/borger/pasning-og-skoler/skole/folkeskoler/>

Leisure time

It is always important to be part of the leisure activities in the municipality where you live. Billund Municipality offers many leisure activities within sports and culture for children.

Some of the activities can be seen at the following links:

<http://ggif.dk>

<http://billundkultur.dk>

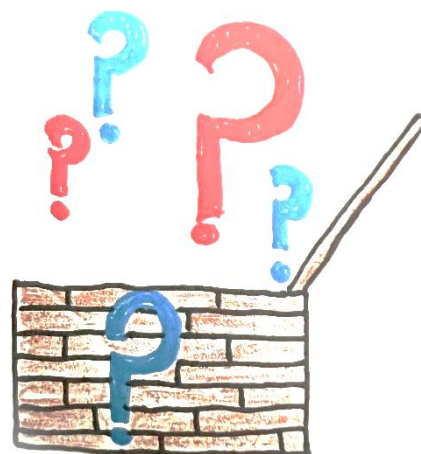
Questions

With this leaflet we want to answer some of the questions that you as parents may have in connection with your child's start at Stjernen at Vestre Skole.

At the visitation you will also receive the school's Culture Document, which provides an insight into everyday life and the educational work with the students.

Should any further questions arise, you are always very welcome to contact us.

We look forward to a good collaboration - and once again warmly welcome you to Vestre Skole.



Contact people

Trine: +45 22852820

Helle: +45 25568249

[illegible]